

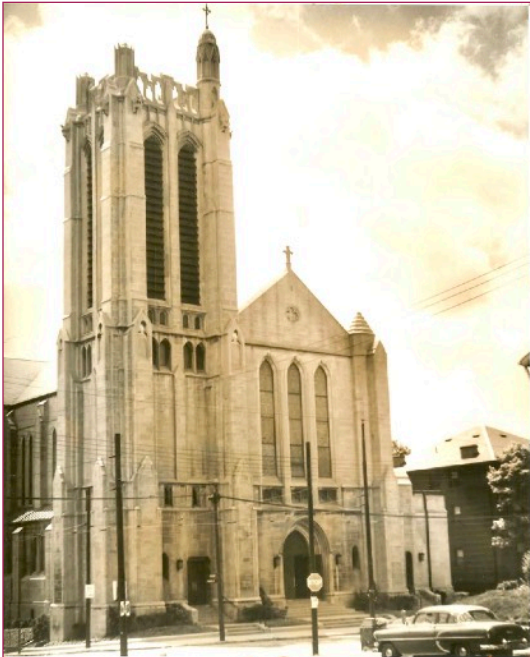


Archives

AUGUST
2023

WILKINSBURG HISTORICAL SOCIETY NEWSLETTER
VOLUME 29, ISSUE 7

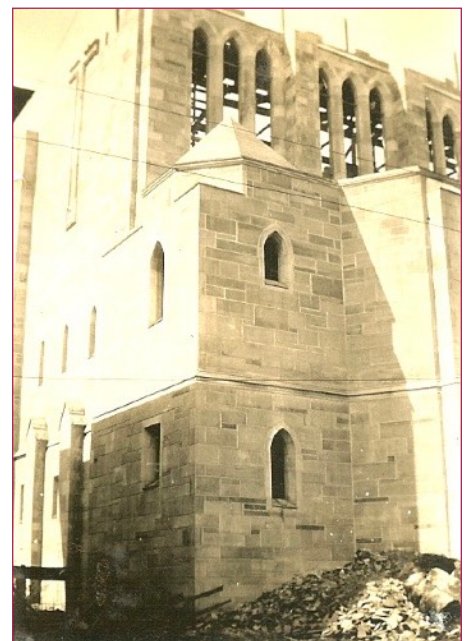
St. James Church (St. Mary Magdalene Parish) on Franklin Ave. at Mulberry St.
to participate in Sacred Spaces Tour September 9, 2023.



The Gothic architecture and stunning stained glass windows of St. James Church will be featured when tour-goers visit during Sacred Spaces Tour 2023. The Catholic cathedral was built in 1928-1929 and the dedication was August 10, 1930. The architect was William P. Hutchins (1883-1941), who also designed at least eighteen other Catholic churches in the Pittsburgh area. It is widely regarded that St. James in Wilkinsburg was his finest Gothic structure. It was a challenge to create a 1200-seat Gothic cathedral on a relatively small lot in Wilkinsburg. The tower is decorated at the top with angels and swans. The bell tower holds twenty bronze bells. The interior is Indiana limestone, the floors are of imported marble. The 80 foot ceiling is paneled in solid chestnut. The altar is 35 feet tall and made of hand-carved oak.



The fourth pastor of St. James was Monsignor Stephen Walsh, appointed in January, 1919. It was Monsignor Walsh who pushed to build the magnificent church building. Construction began in February, 1928. These images were taken in 1929, at the beginning of the Great Depression. Walsh felt that many of the laborers and construction crew needed employment so the church was completed as planned.





Nave and sanctuary of St. James in 1930, facing the Altar from the Franklin Avenue entrance. The ceiling soars to eighty feet.



The 1200 seat cathedral-style St. James Church as seen in 1930. Some pews have been removed and it now seats 800 people.



St. James bell tower has a twenty bell carillon. When the church was dedicated in 1930, the *Pittsburgh Press* featured an article about the bells. "Wilkesburg has the largest carillon found in any Catholic Church in the United States, and there are few churches of any other denomination which have a better set." The big bell weighs 4,495 pounds. The little one is but 440 pounds. In this 1930 image several school boys reverently gaze at the inscription on the massive bronze bell.

Dedication day, August 10, 1930 for the new Gothic style St. James Catholic Church. There was standing room only as faithful parishioners flocked to Mass to experience the worship service in the new church.

In recent years several area Catholic churches have merged, and some have closed. The merger of St. Bede, St. Charles Lwanga and St. James in January 2020 has resulted in the new St. Mary Magdalene Parish. Fr. Thomas Burke serves as priest.

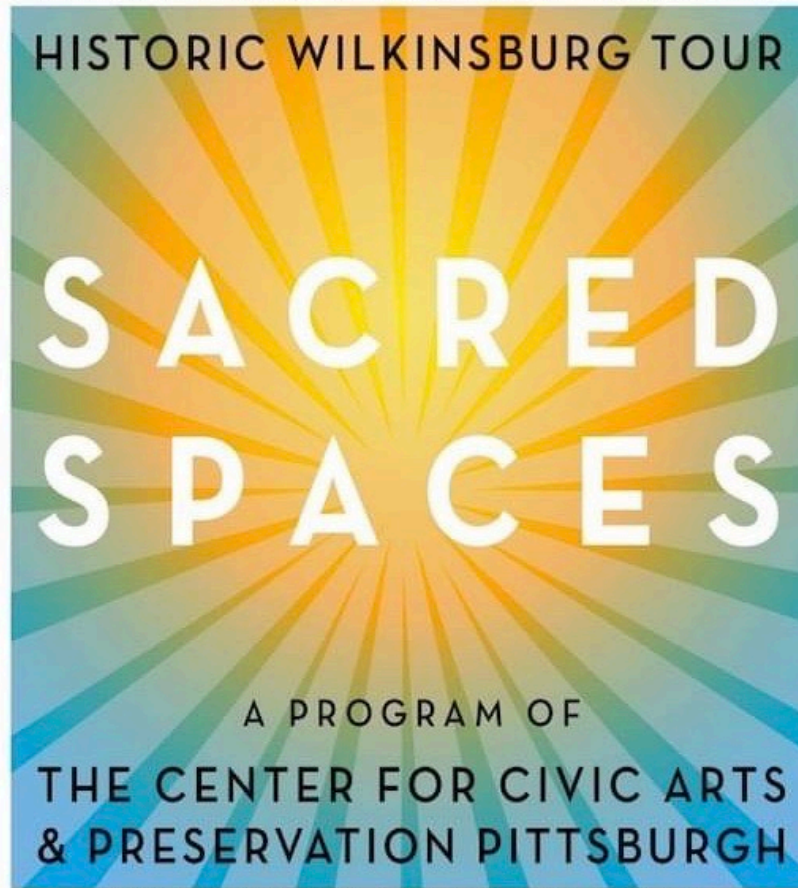


MUSIC IN SACRED SPACES TOUR

SATURDAY • SEPTEMBER 9, 2023 • 10AM - 5PM

• CENTER FOR CIVIC ARTS (ABANDONED CHURCH) • ST. STEPHEN'S EPISCOPAL •

• SOUTH AVENUE METHODIST • ST. MARY MAGDALENE PARISH / ST. JAMES •



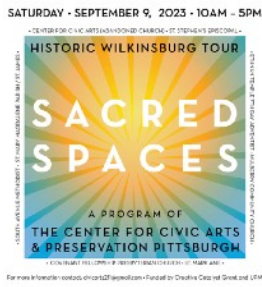
• ETHAN TEMPLE 7TH DAY ADVENTIST • MULBERRY COMMUNITY CHURCH •

• COVENANT FELLOWSHIP PRESBYTERIAN CHURCH • ST. MARK AME •

For more information contact: civicsarts211@gmail.com • Funded by Creative Catalyst Grant and UPMC

Tour begins at St. Stephen's Church at 10:00AM. Each church has a scheduled time.





In partnership with **Preservation Pittsburgh**, **Center for Civic Arts** is presenting the 2023 Music in Sacred Spaces Tour. Come explore the City of Churches, AKA Historic Wilkinsburg, **Sept 9 2023** from 10AM – 5PM, with the closing ceremony at 5:30 – 8PM, Mulberry Presbyterian Church, 710 Mulberry Street 15221. The Tour schedule will be announced shortly. The Tour will feature transcendent experiences found through soaring architectural spaces, stain glass, organ music and the improvisational dance by Shana Simmons Dancers who accompany the church musicians in a mix of historic and contemporary performances. Photographers are welcome and are encouraged to upload their favorite photographs of the Tour to be considered for a \$100 best photograph prize.

Churches on the Tour include:

Covenant Fellowship Presbyterian Church (c1909)

Ethnan Temple 7th Day Adventist (c1883)

Mulberry Community Church (c1915)

Mulberry Second Presbyterian (c1905. Now abandoned, Center for Civic Arts)

South Avenue United Methodist (c1909)

St Mark AME (c1912)

St James/St Mary Magdalene Parish / (c1928)

St Stephen's Episcopal Church (c1882)

Donations of any amount accepted. Tour donations will establish the first emergency repair fund for churches on the tour. However, it is free to attend, and all are welcome.

The **2023 Music in Sacred Spaces Tour** is sponsored by **UPMC**.

Center for Civic Arts is a Wilkinsburg based nonprofit whose mission is to invest in and preserve cultural assets that in turn foster community revitalization. Center for Civic Arts is located at 710 Mulberry Street 15221.

<https://civicarts211.wixsite.com/website-1> 412 867 0992

Preservation Pittsburgh is a community-based, advocacy organization that believes everyone deserves a voice in preserving our city. Preservation Pittsburgh is located at 1501 Reedsdale Street, Suite 5003 Pittsburgh 15233.

<http://www.preservationpgh.org> 412-256-8755

WPSD to host annual Community Block Party Saturday, Sept. 23 from 1:00 to 4:00 PM



The **Wilkesburg Historical Society** will participate at the Western Pennsylvania School for the Deaf Community Block Party. This has been an annual event to engage and entertain the community around the campus of WPSD. There is always a festive atmosphere with dancers, petting zoo, face painting, games, food and activities. Information is available from table displays by organizations and businesses. This event is at the WPSD campus, 300 E. Swissvale Avenue at the Edgewood/Wilkesburg border. The **Wilkesburg Historical Society** has always a special relationship with WPSD, as the school was founded in 1869 on ten acres of land donated by James Kelly for the purpose of developing a school to educate deaf children. The Historical Society has a table at the event with an assortment of information, books for sale and a game for the attendees to play.



This large bronze plaque is prominently displayed in the central hall entrance to WPSD at 300 E. Swissvale Avenue, Edgewood, PA 15218. It honors James Kelly for his generosity in providing the land for the school. Kelly donated ten acres, but over the past 150 years the school has acquired additional acreage and now has over twenty-one acres. WPSD is up-to-date in every way and continues to focus on providing superior educational outcomes to meet the unique needs of deaf and hearing impaired students.

Dream City Magic Gala, benefitting the WCDC, to be held September 23, 2023

Celebrated magician and storyteller Jon Tai will be performing at this very special event!



DETAILS & TICKETS
SHOWCLIX.COM/TICKETS/
WCDC-GALA



Gala will be held in the historic restored Wilksburg Train Station. This exciting event celebrates the WCDC's achievements during the past 15 years, while looking ahead towards future programs and projects to impact Wilksburg people and businesses.

DREAM CITY MAGIC GALA

SEPTEMBER 23, 2023
7 PM - 10 PM
WILKINSBURG TRAIN STATION
901 HAY STREET, WILKINSBURG

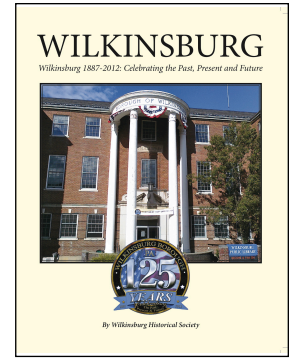
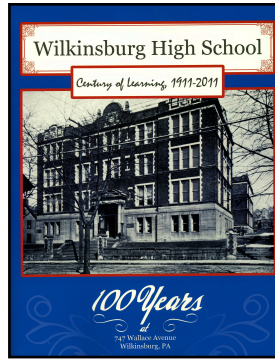
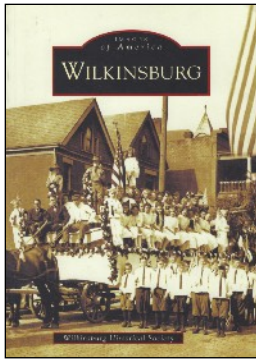
JOIN US FOR A SPECIAL CELEBRATION OF OUR WORK AND ACCOMPLISHMENTS OVER THE PAST 15 YEARS. WE ARE THRILLED TO OPEN THE HISTORIC WILKINSBURG TRAIN STATION FOR THIS ONE-OF-A-KIND EVENING OF MAGIC, MUSIC & SO MUCH MORE!

YOU DON'T WANT TO MISS:
MAGICIAN & STORYTELLER, JON TAI
MUSICAL GUEST, FUSION ILLUSION

DETAILS & TICKETS: SHOWCLIX.COM/TICKETS/WCDC-GALA

SPONSORS: **TRISTATE CAPITAL** **COMMUNITY LIFE**
GRAND VIEW DEVELOPMENT CO.
HOSANNA HOUSE, INC.
METRO COMMUNITY HEALTH CENTER
MILESTONE

大成 DENTONS **COHEN & GRIGSBY**



These are the three books that the **Wilkinsburg Historical Society** wrote and published during the past twelve years. They help to promote and preserve the history of Wilkinsburg and raise funds for the various projects of the Society. All three books are still available to purchase from the Society. Another way to support the activities of the Historical Society.

On the far left is ***“Images of America - Wilkinsburg”***, a 128 page soft-bound book printed by the Arcadia Publishing Company. It includes over 220 black and white photos depicting the history of our town from the early land patents in the late 1700s up to the 75th celebration of Wilkinsburg in 1962. The book is available from the Wilkinsburg Historical Society for \$20.00, plus \$3.00 for shipping.

The middle book above is ***“Wilkinsburg High School - Century of Learning 1911-2011”***. This book chronicles the history of the local high school from its early start in the late 1880s, the creation of the magnificent structure in 1910, and each decade since with highlights of the events that were important in the lives of the students and the Wilkinsburg community. For over 100 years the Wilkinsburg High School served the Borough of Wilkinsburg students and this book has several hundred photos showing much of this important history. This *Century of Learning* book is available from the Wilkinsburg Historical Society for \$15.00, plus \$3.00 for shipping.

The book on the far right is ***“Wilkinsburg - 1887-2012, Celebrating the Past, Present and Future”***. This book was produced by the Historical Society in 2012 to recognize the 125th anniversary of Wilkinsburg’s incorporation as a Borough. This soft-bound book has 196 pages and includes chapters on the history of Wilkinsburg, the celebrations from the past, information about Wilkinsburg’s government, and all the events that occurred during the 125th celebration. There are several chapters about the clubs and organizations in Wilkinsburg as well as the churches and worship centers in the Borough. The “future of Wilkinsburg” section recognizes advertisers and sponsors who helped to fund the creation and printing of the book. This book, originally \$15.00, is now available for \$10.00, plus \$3.00 for shipping.

<p>Make check or money order payable to: Wilkinsburg Historical Society Orders can be mailed to: Wilkinsburg Historical Society, P.O.Box 17252, Pittsburgh, PA 15235</p>			
Images of America - Wilkinsburg	(\$20.00 + \$3.00) = \$23.00	Quantity_____	Total _____
Century of Learning 1911-2011	(\$15.00 + \$3.00) = \$18.00	Quantity_____	Total _____
Wilkinsburg 1887-2012	(\$10.00 + \$3.00) = \$13.00	Quantity_____	Total _____
Name_____		Address_____	
City_____	State_____	Zip _____	



Don't miss out on **The Wilkinsburg Sun**, a free monthly community newsletter published by the volunteer Wilkinsburg Community Newsletter Board, with the support of the Wilkinsburg Borough, the Wilkinsburg School District, the Wilkinsburg Chamber of Commerce and the Wilkinsburg Community Development Corporation.

The Sun accepts submitted articles provided they are related to Wilkinsburg and are civic-minded.

<https://wilkinsburgsun.wordpress.com>

Sign up to receive The Sun by email at:

<http://eepurl.com/v0iBP> and friend The Sun on Facebook.

Wilkinsburg Historical Society has a website, to share more information about the history of Wilkinsburg. wilkinsburghistory.wordpress.com

Mailing address: **Wilkinsburg Historical Society, P.O. Box 17252, Pittsburgh, PA 15235**

The "Archives" Historical Society newsletter is published monthly, March through November.

We do not usually publish the Archives during the three Winter months of December, January and February.

Wilkinsburg Historical Society yearly dues for the Wilkinsburg Historical Society are:

\$20.00 INDIVIDUAL Member, \$35.00 FAMILY Membership

\$10.00 STUDENT or ASSOCIATE Members Please keep your membership dues up to date.

Contributions are needed for "Lights for Lincoln", to get improved lighting for the Lincoln Plaza area. Abraham Lincoln stands in the dark after sun-down. Your donation can help us illuminate this outstanding area overlooking the Lincoln Highway.

Wilkinsburg Historical Society - Membership application
Help promote the valuable history of Wilkinsburg.

Name _____

Address _____

City, State, Zip _____

Home Phone _____ Cell Phone _____

E-mail address _____

() \$20 Individual membership

() \$35 Family membership

() \$10 Student or associate membership

() \$_____ Additional donation

Please make check payable to: **Wilkinsburg Historical Society**
PO Box 17252, Pittsburgh, PA 15235

Anytime is a good time to pay your dues for the Wilkinsburg Historical Society. We have many preservation projects going on, and providing displays for Wilkinsburg events. Many thanks to those of you who have already sent in your membership dues. Please use the address on the form, our PO box.